

Collection

2022 / 2023

puik

CREATING
new
originals

Now's the time for a new beginning, for a fresh take on Dutch design. We returned to the essence and found a boundless source of inspiration in primary shapes and colors. Monumental elements, which alone can lift entire spaces to a new level, are recomposed into bold silhouettes.

We create new originals.



Timeless

It's important to make a good and sustainable product. You fall in love with it when you first see it, and each time you use it, it evokes something. Because you love it you tend to it for years to come, eventually replacing the fabric and finally passing it on to your kids. That's the essence of good design.

Original

By narrowing it down to its very essence, puik reimagines Dutch design. The remaining monumental elements are recomposed into new originals, forming an ever-growing collection by Dutch design's finest.

Monumental

Design has a transformative quality: it can lift up a space and render it extraordinary. Iconic 'wow' items can excite instantly and are remembered forever.

Critical

Good design is only excellent when it's good for all parties involved, including our planet. High standards should be non-negotiable, so puik sets the bar high and keeps its footprint low.

Furniture

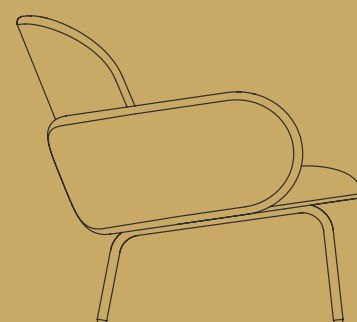




Dost collection

This inviting, cosy collection has been designed to provide a sense of solace and safety. Named for the native word meaning 'friendship', the Dost lounge chair was inspired by one of our most basic human needs: comfort.

BY RIANNE KOENS



DOST COLLECTION

Always better
together

Whether you're having a bad day or just want to curl up with a good book, a few moments resting on a Dost chair will be as comforting as a cuddle from an old chum.









Chester collection

One of the most iconic archetypes: the Chesterfield. The classic sofa is reinvented by stripping it of its details and minimising it to a contemporary, sculptural sofa.

BY LEX POTT

The Chester series was designed by Lex Pott. In his work Lex returns to the origin of the materials he uses most, such as wood, natural stone and metal. He does not hide his designs under indirect layers, but reduces them to their essence. Lex works from his studio in Rotterdam and previously designed a series of innovative mirrors, a minimalist clothes hanger and side table Hinge for Puik.

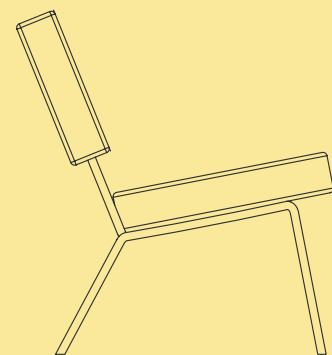




Option collection

Inspired by primary forms, a playful line of chairs was created with just two simple shapes. Uniting circles and squares in a geometric marriage.

BY FREDERIK ROIJE



OPTION COLLECTION

The added
value is the
story behind
the product

For Frederik Roijé this added value is the design's focal point and goes beyond pure functionality. For that reason beauty, geometric structures, and functionality in living environments are intertwined in these products manufactured in Amsterdam.







Pi collection

The connection of the tubes at the back of the chair looks like the 16th letter of the Greek alphabet, the letter pi π . The name for the chair was quickly found.

BY RICHARD HUTTEN



For the design of the Pi chairs, Richard Hutten was inspired by the rich history of Dutch design from the middle of the 20th century. Pi is a timeless design, with surprisingly good comfort. The chair invites you to dine or to read a book for a long time.

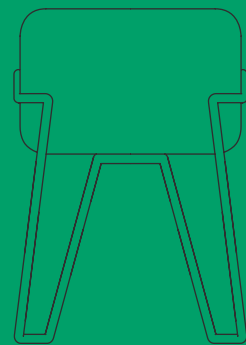




Bokk collection

Add a nostalgic nod to any room with Bokk: a contemporary stool inspired by classic school gym equipment.

BY KAI-LAI CHAN



BOKK COLLECTION

The added
value is the
story behind
the product

Designed to be tough on the outside and soft on the inside, the frame forms an interesting geometric play of lines. The Bokk is available in two sizes, multiple colors and materials. Ka-Lai Chan, the designer of the Bokk collection want to give a nostalgic feeling to the stool.







Fold collection

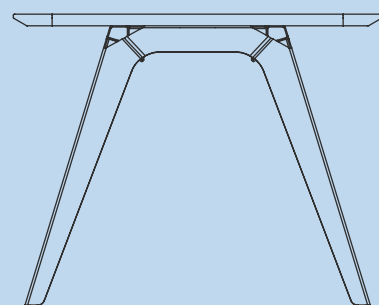
Practical yet pleasing to behold, the Fold table incorporates a solid oak top and a 'folded' steel base. An embodiment of versatility and contemporary style, the Fold table is sure to suit any space.

BY BAS VELLEKOOP



FOLD COLLECTION

An inventive
table for a
modern home



The frame consists of eight individual parts that have been folded together, origami-style, resulting in elegant joints and an impressive finish. The Fold table is available in multiple color combinations.





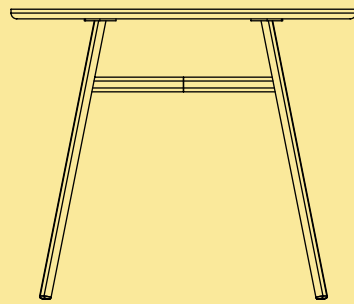
Tress collection

Thanks to the sleek table legs, various perspectives are created. Where it looks narrow on one side, you look at the wide part on the other.

BY ILIAS ERNST

TRESS COLLECTION

Round meets rectangle



Soft curves on both sides ensure that the table looks slim and creates enough seats. Rectangular makes the table practical, with the rounded corners making the table stand out and look softer. The best of both worlds.

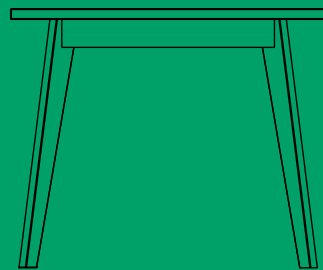




Archi collection

Powerful in its simplicity the Archi family is a set of tables made to fit a basic need with a well thought-through solid wooden design.

BY INTERIOR ELEMENTS



ARCHI COLLECTION

Shapes every detail

For Frederik Roijé this added value is the design's focal point and goes beyond pure functionality. For that reason beauty, geometric structures, and functionality in living environments are intertwined in these products manufactured in Amsterdam.





The Archi excels both in the use of refined materials and the deliberate shaping of every detail. The distinctive table top contour is drawn down on the legs, providing the design with a unique characteristic for the observant furniture lover.

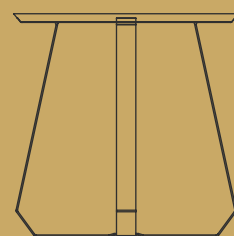




Shunan collection

The Shunan table in multiple variations represents a perfect marriage of classic simplicity and present-day flair.

BY NIEUWE HEREN



SHUNAN COLLECTION

Natural beauty
meets noble
design

Bring the outside in with Shunan, our round metal and wood coffee table. It's curved ash top is supported by strong, vertical steel legs, creating an organic and elegant feel. The Shunan Side Table is available in two sizes and multiple color combinations.







Hinge collection

The Hinge side table is an inventive table for a modern home. Available in various dimensions and multiple strong colors to allow for a unique landscape of design pieces.

BY LEX POTT

The Hinge side table vocalises the beauty in simplicity. The starting point was the traditional hinge: two interlocking metal plates connected by a rod. As the functional is made ornamental, the Hinge side table is subtly expressive and allows for a unique landscape of design pieces.



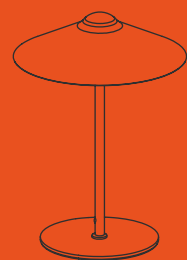




Bonnett collection

With his signature approach of reducing a design to its essence, designer Lex Pott created a minimal lamp that, quite literally, brings character to a space.

BY LEX POTT



BONNETT COLLECTION

You can
leave your
hat on

The elegant design allows you to guide the light yourself: as the magnetic lampshade firmly sticks to the lightbulb, you can change its position just as easy as rearranging a hat. The Bonnett is available in two sizes.



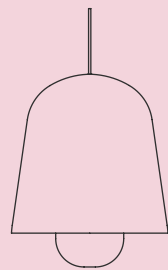




Cone Pendant Light

Pure form leads the way of this classic and timeless design. Designed by combining shapes and sizes the core of its design was reached.

BY KRANEN / GILLE



CONE PENDANT LIGHT

A single line sketch

It might look simple, but you might have to draw the same lamp three hundred times before you've got a great result. Before it becomes the lamp you want to see. This resulted in the Cone light, with as its focal point a glass cylinder emerging from that one perfect shape.

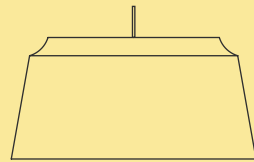




Groove collection

Elevate the style of any room with this classic yet modern design. The Groove ceiling light is a casual twist on the traditional pendant light. Available in multiple colors and sizes.

BY ILIAS ERNST



GROOVE COLLECTION

Groove up your style

In the design process Ilias Ernst was looking for a shape that could be widely applied. The lamp feels at home in both a modern and classic interior. Furthermore, the lamp has both a homely and business character. Hang multiple Grooves in different sizes for a high impact style or let its simple lines and laidback elegance be the focal point on its own.



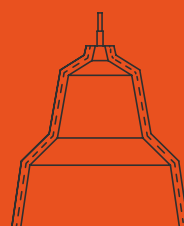




Lloyd collection

Lighten the mood with Lloyd, our buttery leather lamp shade that brings a new dimension to every modern setting.

BY NIEUWE HEREN



LLYOD COLLECTION

There will
always be
imperfections

Handmade using a traditional method for hardening and moulding hides, each individual leather lamp is finished with a bold stitch down the side. The designers, Nieuwe Heren have applied a forgotten technique to a contemporary product.

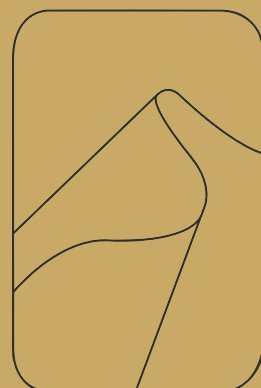




Berg collection

Creating a new landscape in your home. Thanks to its dynamic design, Berg has a timeless yet playful vibe that fits every space. Created in multiple color combinations for different interiors.

BY SANDY VISSER



BERG COLLECTION

Always soft
and warm

Hand-knotted with care in New Zealand. Berg is made out of 100% wool. The Berg rug adds a playful yet refined expression to livingrooms, bedrooms and other areas in a home. Available in different color options, it features a polyester backing to secure the mat firmly in place.







Duplex collection

Taking the familiar and giving it a twist, this contemporary storage system is a subtle play of primary shapes.

BY FREDERIK ROIJE

These two-sided, switchable wall shelves can be hung top-down or bottom-up, meaning you can create a thoroughly modern shelf design that is unique. These playful shelves are available in a wide range of colors, these versatile shelves can be used in many different rooms in the home, such as a key shelf in the hallway, storing kitchen utensils or displaying ornaments in the living room.





Facett collection

An innovative design that combines faceted glass and three-dimensional shapes, these full length mirrors provide a perfect bridge between classic and contemporary styles.

BY LEX POTT

In my work I try to get to the essence of the material. In this case glass, which is a flat material. I wanted to create a 3D effect, a feeling of space and depth. We literally created a bridge between the old in the technical side and the new in the modern design. The beauty of the minimalism in the design is that through the technique the shape really comes into its own.





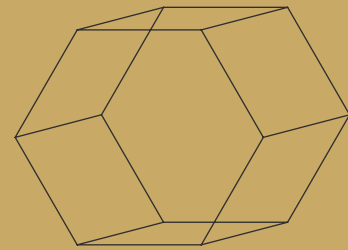
Iso collection

Designed using the principles of isometric perspective, this designer rug will entice you to look twice as you work out whether the shape is two-dimensional or three.

BY ONTWERPDUO

ISO COLLECTION

Made you
look, made
you stare



The work of Ontwerpd duo is poetic and practical at the same time. In most of their designs, they implement a playful touch that is predominant without being overdone. The image of Iso is very powerful because of the incorrect perspective: a three dimensional appearance within a two dimensional product.



Accessories



Boeien

Boeien is no ordinary salt and pepper set. The work of Ka-Lai Chan is always based on wide experiment with basic materials.

BY KA-LAI CHAN

Beautifully constructed from cork and glass, each shaker has a convex bottom that creates a slight tilt when it is placed on a surface. The end result is dynamic and playful. An indispensable object in the kitchen and on the daily table. Boeien will spice up your tasteful experience.

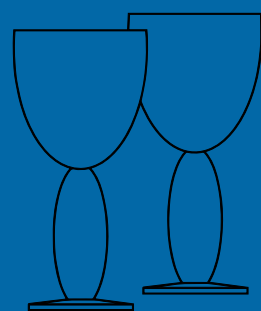




Boon collection

Inspired by spring street fairs, full of rainbow colors and the smell of cotton candy, where clowns blow balloons and roller coasters make you scream.

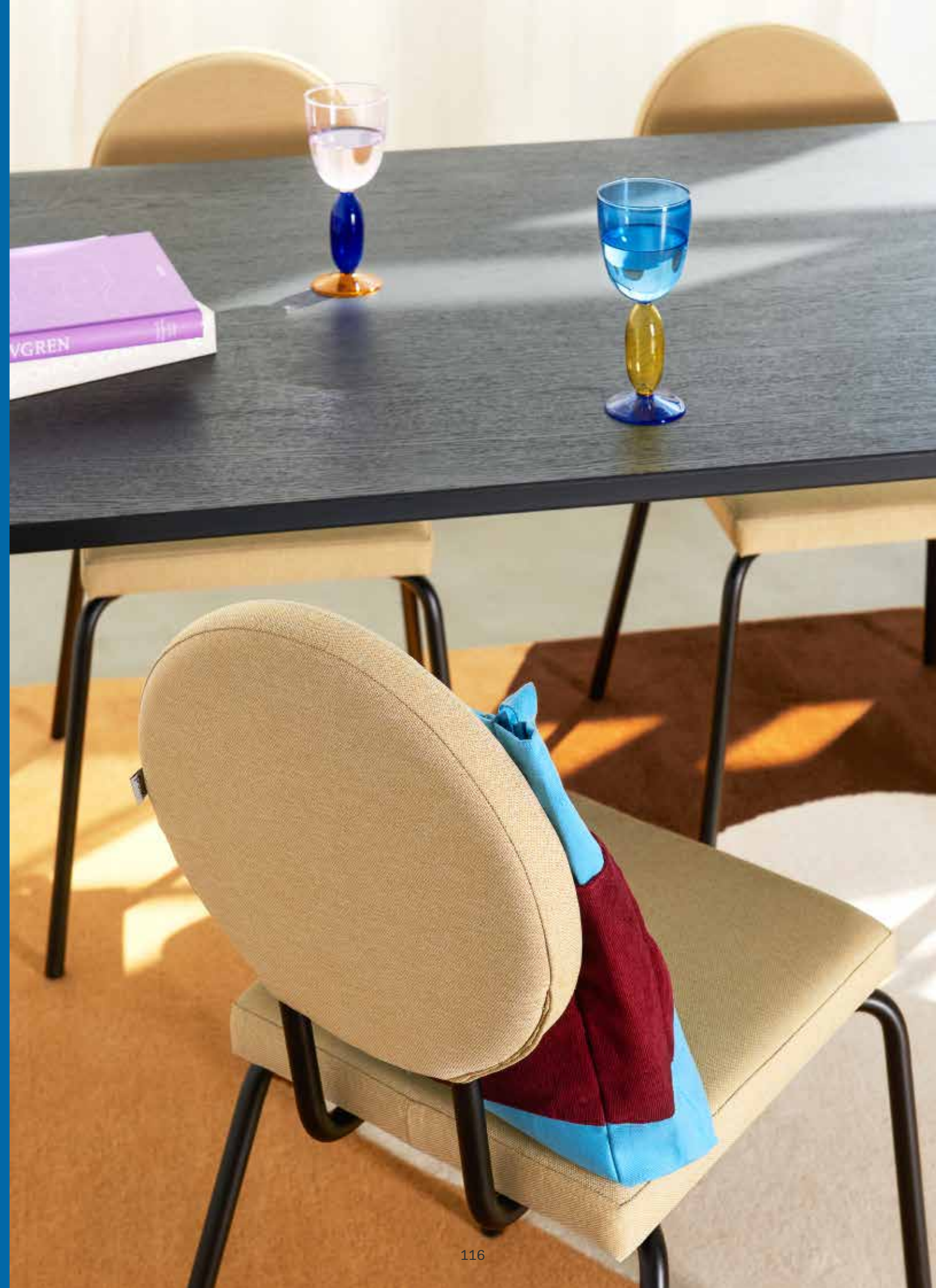
BY PUIK DESIGN



BOON COLLECTION

Not only for bubbles

Boon glasses bring a spark of joy into your life with its bubbly shapes. Mix and match or take a wild card, nothing has to be ordinary in your home. Boon is an eye catcher that puts a smile on your face. Available in multiple color combinations.







Circum collection

Present and store your sweets and cookies in these circled shaped bowls at the same time. The rainbow-colored glass will keep it all fresh, and use the lid with curved top as a presentation platter.

BY ONTWERPDUO

With its elegant, elevated design and beautiful pastel colors, Puik's Circum presentation platter is a decorative addition to any table. Made in lead-free crystal glass, it attractively displays candy, fruit, snacks and other food, as well as serving as an eye-catching centrepiece. Available in two different sizes.

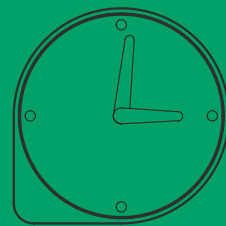




Clork collection

Crafted from cork and stainless steel, this Puik clock will turn punctuality into an art form. The softness of the cork contrasts with the hardness of the metal.

BY ILIAS ERNST



CLOrk COLLECTION

Make time for style

An unusual clock that is both practical and pleasing to the eye. The combination of cork and white metal creates an exciting contrast, whilst the clever composition balances style with stability. Available in two color combinations.





Loop collection

The soft edges have been designed to store your favourite fashion with style, whilst the efficient circular centre provides additional hanging space for accessories.

BY LEX POTT

The design of the Loop originated from an industrial technique: bending metal wire. You can compare this technique to drawing on paper without taking the pencil off the actual paper. So one continuous line which creates a silhouette and results in a product. We've done a lot of sketching and tried different silhouettes. We came to this clothing hanger that's one continuous line, hence the name "Loop".

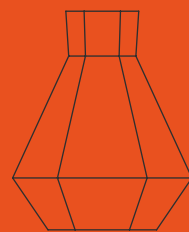




Rare, Radiant & Lucent

Elevate the dining experience with our diamond shaped collection created by Lare van der Lugt. Graphic lines are typical style elements in the work of the designer.

BY LARA VAN DER LUGT

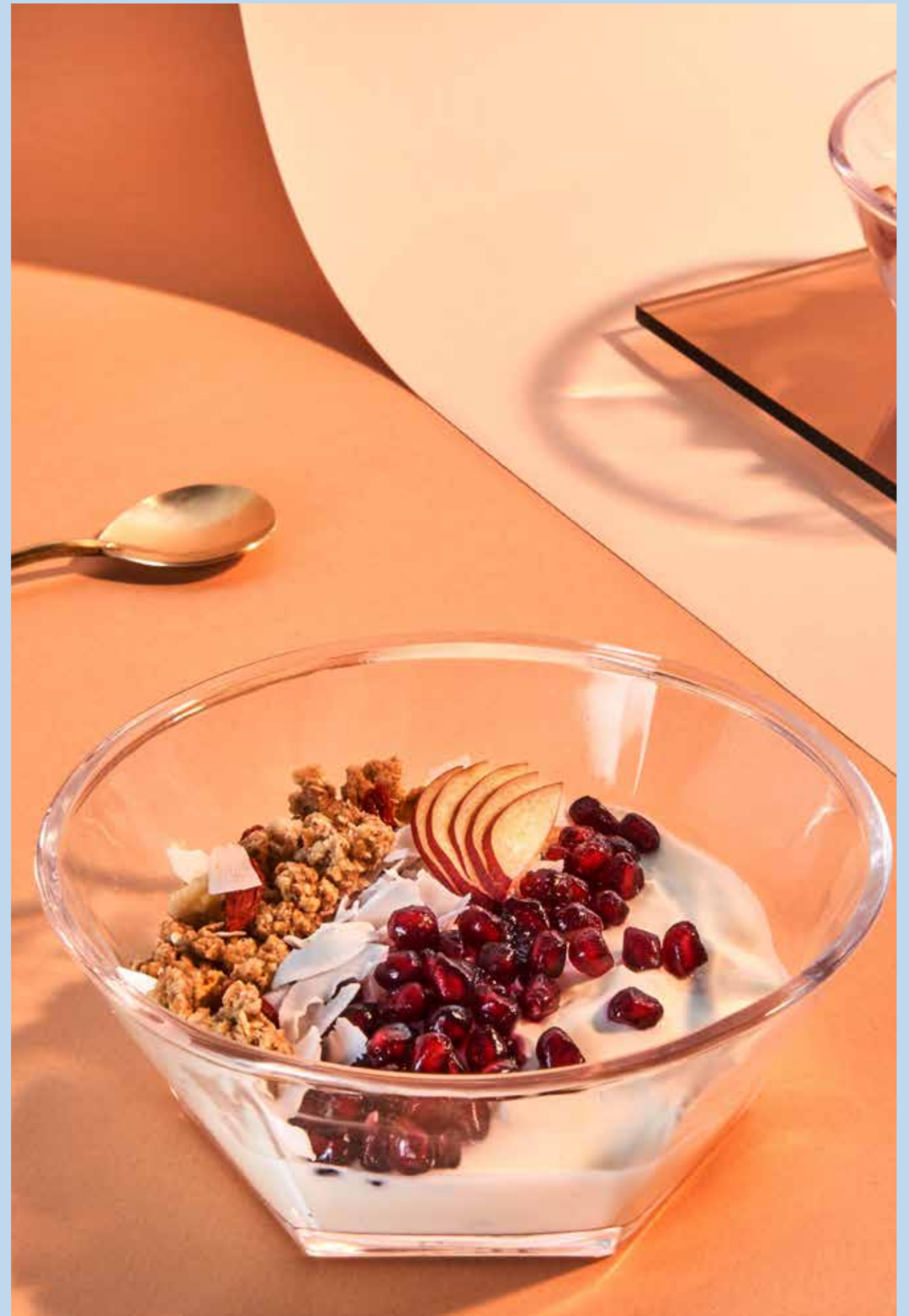


COLLECTION

Diamonds are forever

The intentional interplay of glass, liquid and light immediately draws the eye and creates a perfect centrepiece for your dinner table. Due to the different lines, you can choose to place the products in different positions. This creates an interesting play of composition.



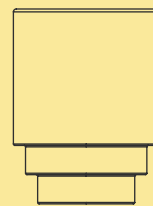




Monday Mug collection

The soft outside makes the Monday Cup comfortable to hold, while the shiny inside allows the coffee to flow elegantly.

BY SIEBRING / ZOETMULDER



MONDAY MUG COLLECTION

Happy Monday

The soft outside makes the Monday Cup comfortable to hold, while the shiny inside allows the coffee to flow elegantly. Available in two sizes: one for espresso, one for cappuccino or hot chocolat. Created in three different colors and perfect for mix and matching.



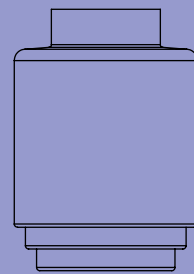




Monday Vase collection

The vase is created by hand to give you the best quality for your beautiful flowers. Its soft edges will ensure you that the base will be easy to handle.

BY SIEBRING / ZOETMULDER



MONDAY VASE COLLECTION

May your
flowers bloom

The combination of glass and steel creates an exciting contrast, making it an elegant whole. The vase can stand alone or on a stand in a room. You can also see how the flower stems rest on the bottom of the vase by floating, something you usually don't see. Lifting also ensures that the vase with flower bouquet is made extra special. The standard is like a pedestal for a piece of art





Plus collection

Take your furnishings further with Plus, a cushion that adds both comfort and creativity to your home. Available in multiple colors and shapes.

BY ONTWERPDUO

By adding a secret seam to the corners, the pillow then pops out, transforming a flat piece of fabric into a three-dimensional cushion that will sit cosily on your couch. Ontwerpduo designs interior products that are practical as well as poetic. Often there is a playful element in it, and it predominates, without being exaggerated.





Ply collection

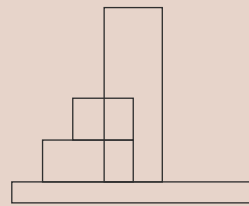
The candle does not need to be lit for the Ply candle holder to command your attention.

BY ISABEL QUIROGA

PLY COLLECTION

The perfect layer

Made of terrazzo and gold steel, Ply Candleholder is available in two heights and two color options. As a designer, Isabel Quiroga always look for the balance between functionality, simplicity and beauty in her work.





Sico collection

The Sico silicone coasters make the most mundane of tasks memorable. Perfect for hot and cold beverages. Available in five soft colors.

BY CECILIA VALENTINE

This set of four coasters is geometric in design, and can be interlocked to safeguard a more substantial surface area whilst creating a playful pattern that is pleasing to the eye.

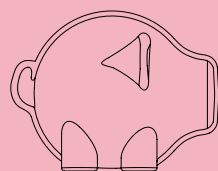




Tammy collection

Keep your coins safe with Tammy, our paint your own piggy bank made entirely out of paper pulp.

BY PUIK



TAMMY COLLECTION

This little
piggywent
to the market

When she's full, you can recreate the timeless tradition of breaking apart your bank without any waste. With Tammy you get the chance to create art for your home yourself. Are you saving for a new sofa or a nice long trip? Link a savings goal to this creative activity by painting or drawing it on the piggy.



info@puikdesign.nl

[@puikdesign](mailto:info@puikdesign.nl)

www.puikdesign.com